



CLADE

WILLOW R600A 500kW HEAT PUMP //

April 2022 //



TECHNICAL INFORMATION //

Clade Willow		500kW
Nominal conditions: Water side Heating		flow 80 °C to 70 °C Return temperature
Nominal conditions: Evaporator		flow 45 °C to 40 °C Return temperature
Compressor Manufacturer		Dorin
Compressor Heating Qty	Pcs.	3xHEX8001CC
Compressor Power @ Design total	kW	134
Circulating pump design power	kW	5
Total	kW	139
Heat Pump Compressor and Pump Design Run Amps DRA	A	271
Ancillary Controls Amps	A	20.0
Maximum operating current	A	505
Total Design Run Amps	A	291
MCCB Rating Amps	A	300
Variable speed drive (VSD)	Pcs.	2
Refrigerant charge (estimated)	kg	15
Electrical supply	-	3~ 400V 50 HZ
Weight (empty)	kg	2813
Weight (operational)	kg	2870
Sound Power	dB(A)	81
Connections waterside flow	DN	125
Connections waterside Return	DN	125
Connections waterside Pressure Rating	PN	10

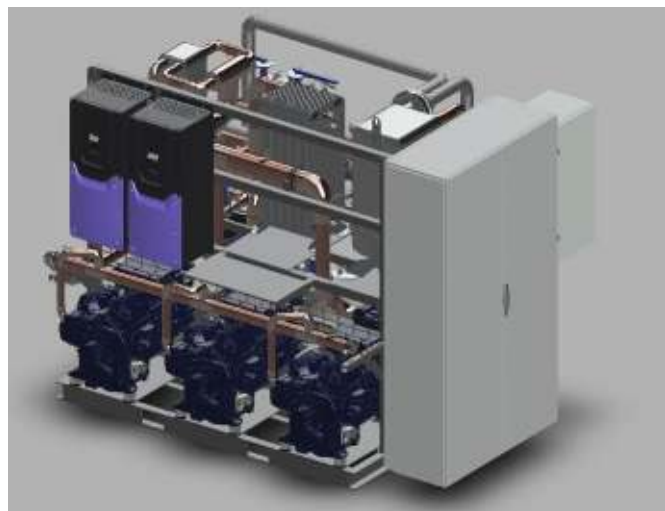


TECHNICAL INFORMATION //

Clade Willow R600 WSHP		500kW
Waterside Burst Disk	PN	10
Communication protocol	-	MODBUS/BACNET
IP-Class	-	IP54
Evaporators Type		PHX
No. evaporators	Pcs.	1
Condenser Type - Heating Plate	-	PHX
No. Condensers - Heating Plate	Pcs.	1
PHX Manufacturer	-	Alfa Laval
Pump Manufacturer		Grundfos
Pump Control		VSD 0-10 V
Colour	-	RAL6035 Forest Green
Heating Pump Included		Yes
Load Pump Included		No
Dimension Length	mm	2416
Dimension Width	mm	2288
Dimension Height	mm	2261
sound pressure @ 10m	db(A)	49

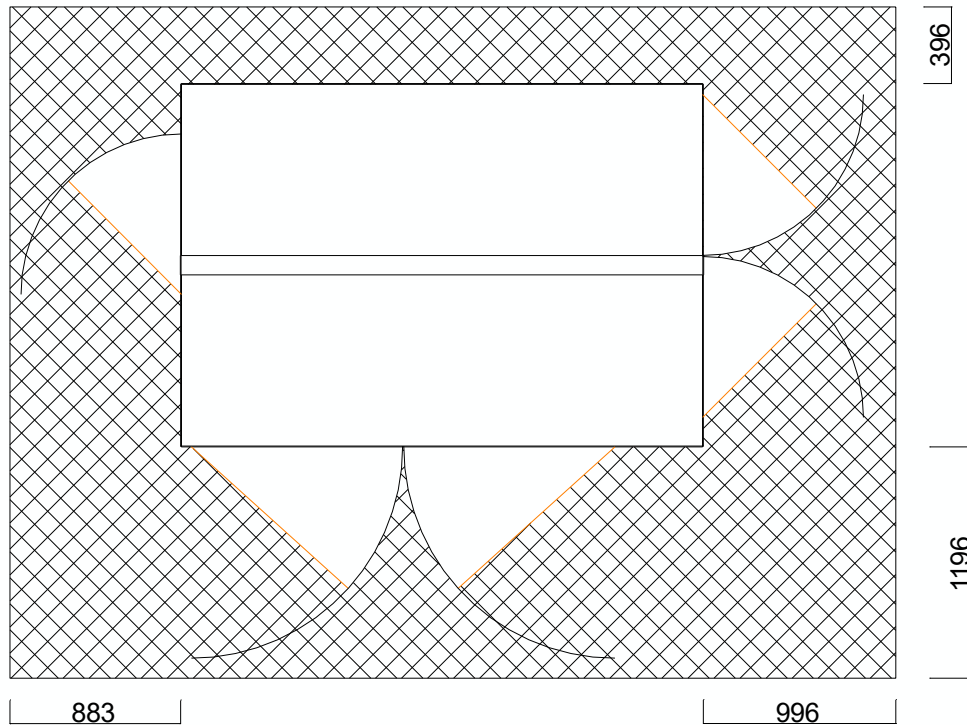


3D Model //



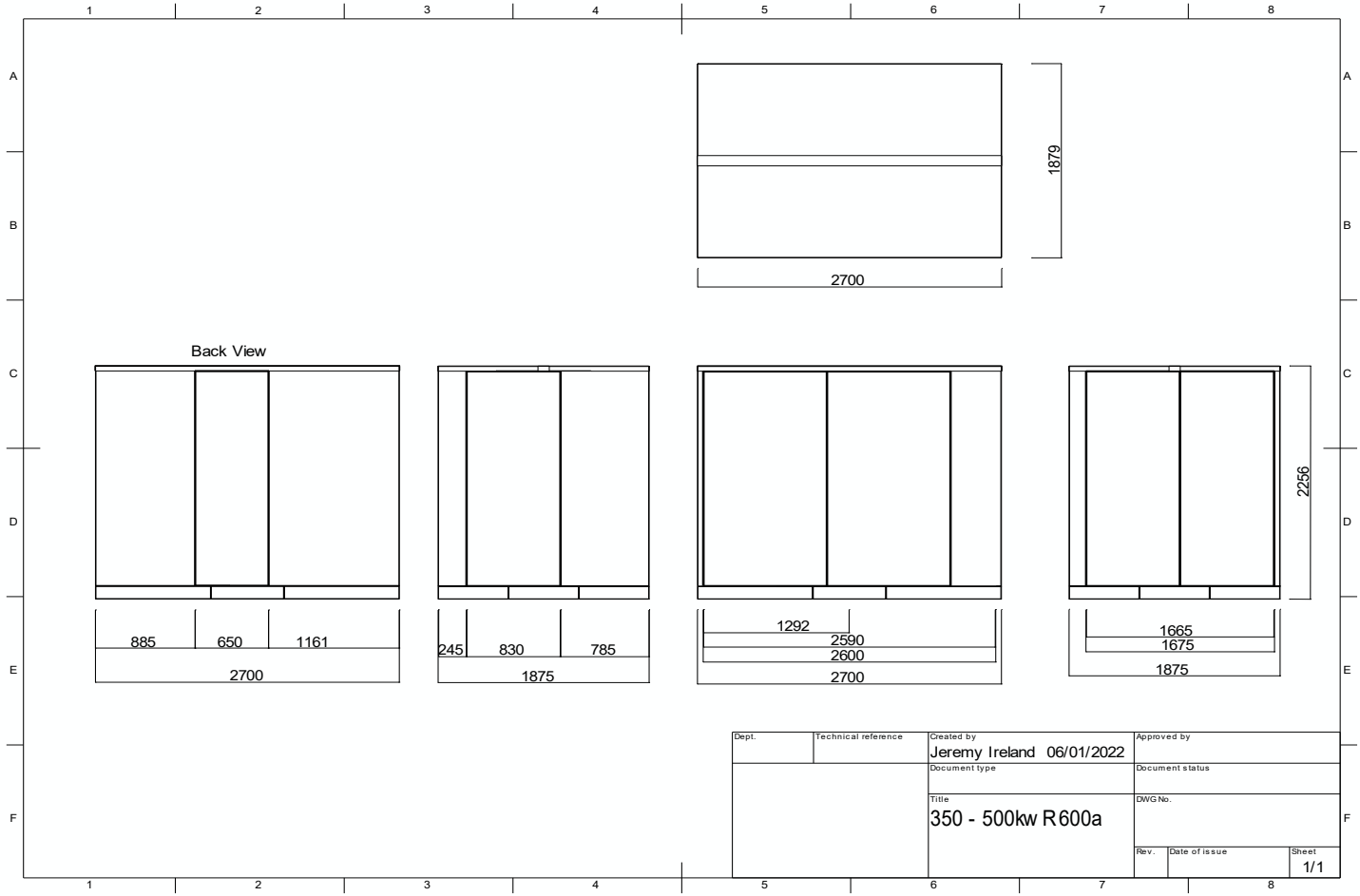


ACCESS DRAWINGS //





DIMENSIONAL DRAWINGS //



Dept.	Technical reference	Created by Jeremy Ireland 06/01/2022	Approved by
		Document type	Document status
		Title 350 - 500kW R600a	DWG No.
Rev.	Date of issue	Sheet	1/1



THANK YOU //

www.clade-es.com

Sales@clade-es.com

Aftersales@clade-es.com

Head Office & Registered Office //
Bristol & Bath Science Park,
Dirac Crescent, Emersons Green,
BRISTOL BS16 7FR

The Technology Centre //
Unit R3 Gildersome Spur Industrial Estate,
Stone Pits Lane, Morley,
LEEDS LS27 7JZ

