



**CLADE**

**WILLOW R600A 400kW HEAT PUMP //**

April 22 //



## TECHNICAL INFORMATION //

Clade Willow		400kW
Nominal conditions: Water side Heating		flow 80 °C to 70 °C Return temperature
Nominal conditions: Evaporator		flow 45 °C to 40 °C Return temperature
Compressor Manufacturer		Dorin
Compressor Heating Qty	Pcs.	3xHEX6000CC
Compressor Power @ Design total	kW	108
Circulating pump design power	kW	4
Total	kW	112
Heat Pump Compressor and Pump Design Run Amps DRA	A	243
Ancillary Controls Amps	A	20.0
Maximum operating current	A	408
Total Design Run Amps	A	263
MCCB Rating Amps	A	300
Variable speed drive (VSD)	Pcs.	2
Refrigerant charge (estimated)	kg	15
Electrical supply	-	3~ 400V 50 HZ
Weight (empty)	kg	2736
Weight (operational)	kg	1790
Sound Power	dB(A)	81
Connections waterside flow	DN	125
Connections waterside Return	DN	125
Connections waterside Pressure Rating	PN	10

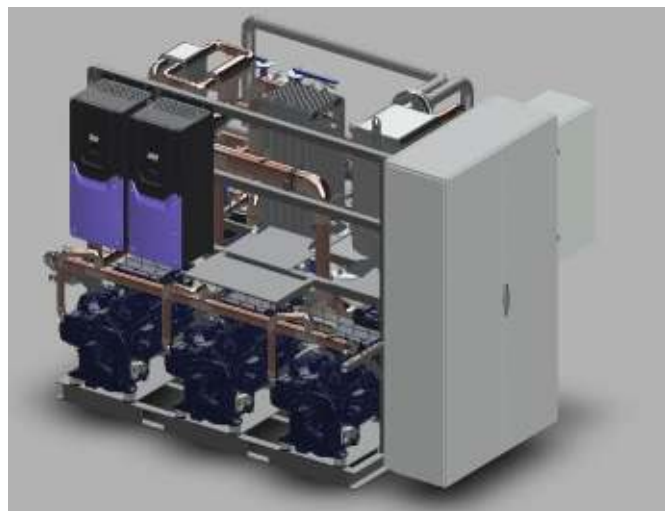


## TECHNICAL INFORMATION //

Clade Willow R600 WSHP		400kW
Waterside Burst Disk	PN	10
Communication protocol	-	MODBUS/BACNET
IP-Class	-	IP54
Evaporators Type		PHX
No. evaporators	Pcs.	1
Condenser Type - Heating Plate	-	PHX
No. Condensers - Heating Plate	Pcs.	1
PHX Manufacturer	-	Alfa Laval
Pump Manufacturer		Grundfos
Pump Control		VSD 0-10 V
Colour	-	RAL6035 Forest Green
Heating Pump Included		Yes
Load Pump Included		No
Dimension Length	mm	2416
Dimension Width	mm	2288
Dimension Height	mm	2261
sound pressure @ 10m	db(A)	49

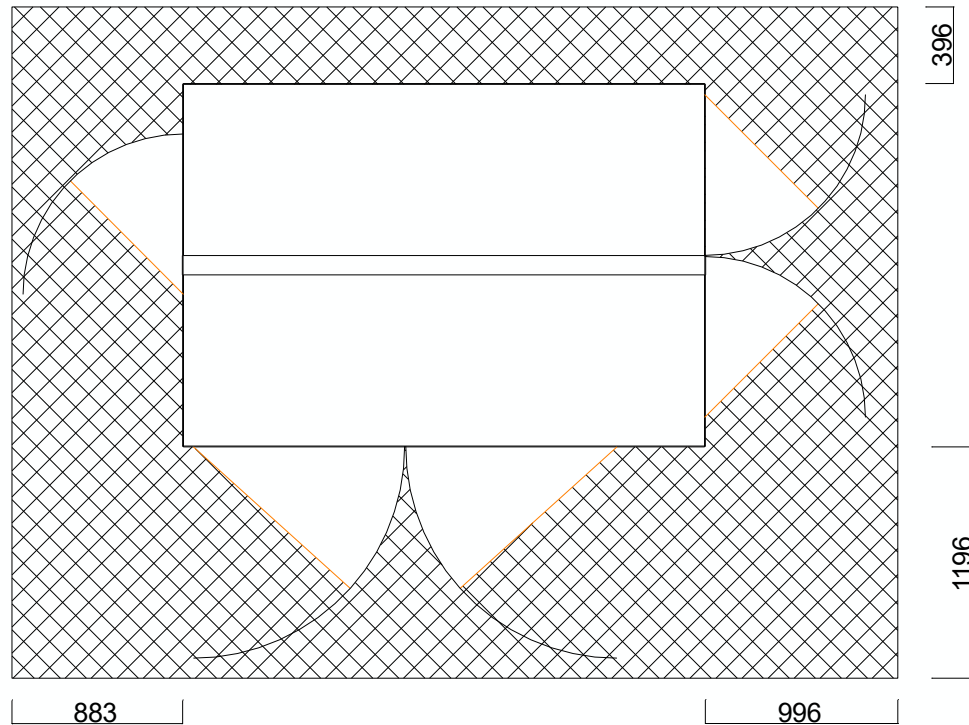


3D Model //



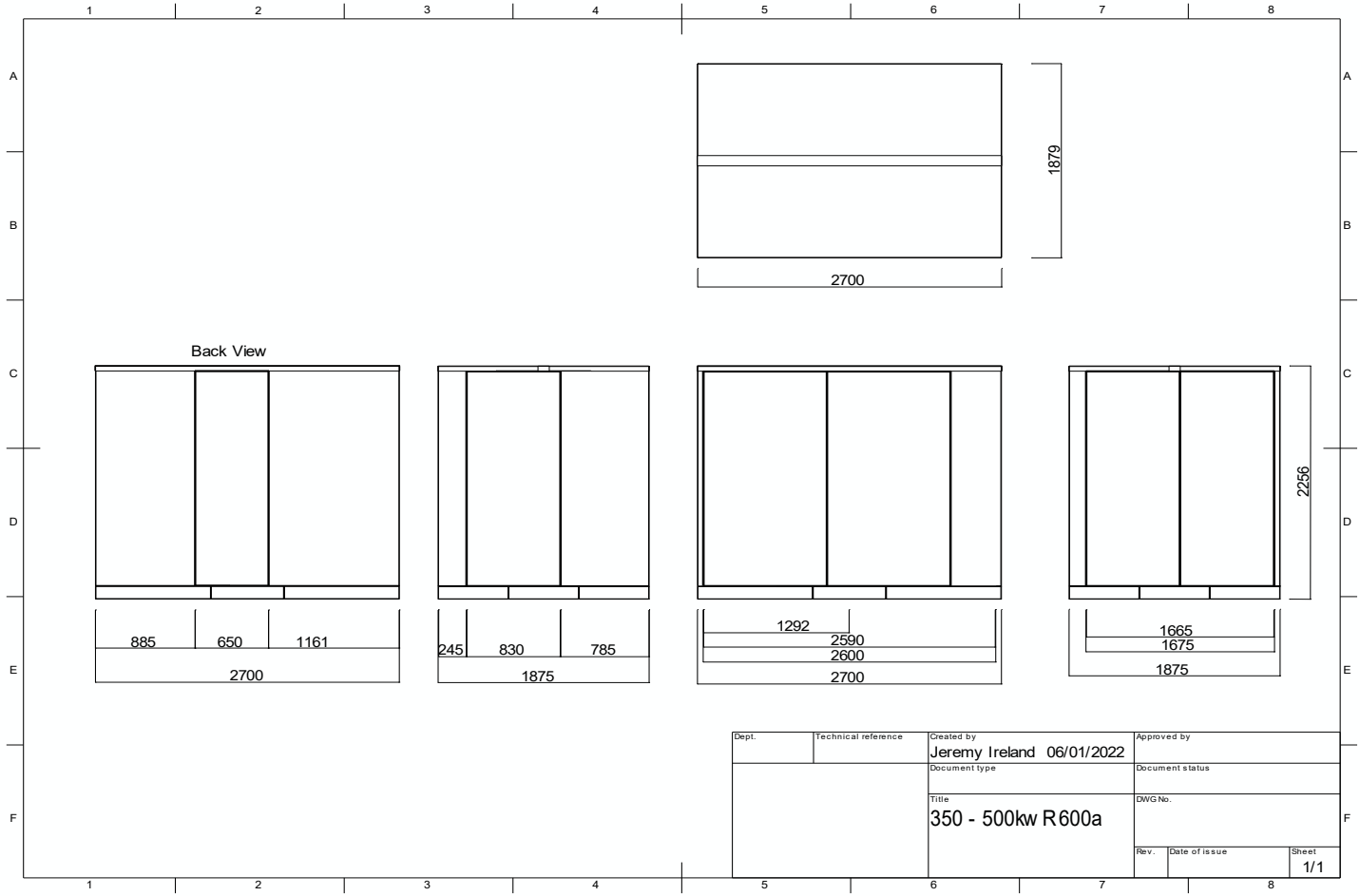


# ACCESS DRAWINGS //





**DIMENSIONAL DRAWINGS //**



Dept.	Technical reference	Created by <b>Jeremy Ireland 06/01/2022</b>	Approved by
		Document type	Document status
		Title <b>350 - 500kW R600a</b>	DWG No.
Rev.	Date of issue	Sheet	1/1



THANK YOU //

[www.clade-es.com](http://www.clade-es.com)

[Sales@clade-es.com](mailto:Sales@clade-es.com)

[Aftersales@clade-es.com](mailto:Aftersales@clade-es.com)

Head Office & Registered Office //  
Bristol & Bath Science Park,  
Dirac Crescent, Emersons Green,  
BRISTOL BS16 7FR

The Technology Centre //  
Unit R3 Gildersome Spur Industrial Estate,  
Stone Pits Lane, Morley,  
LEEDS LS27 7JZ

