



CLADE

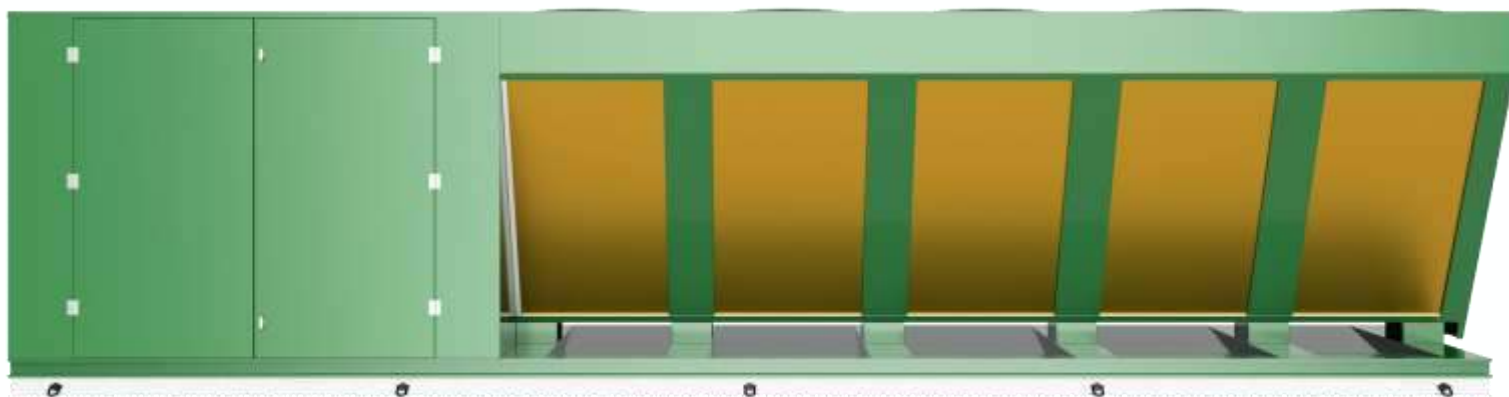
OAK 500kW HEAT PUMP //

Sept 22 //



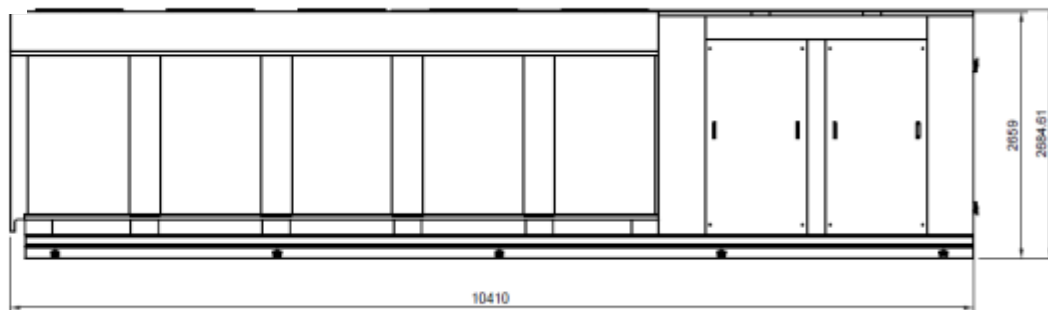
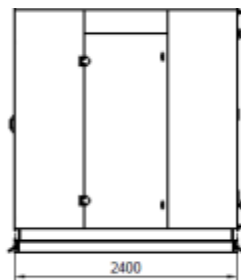
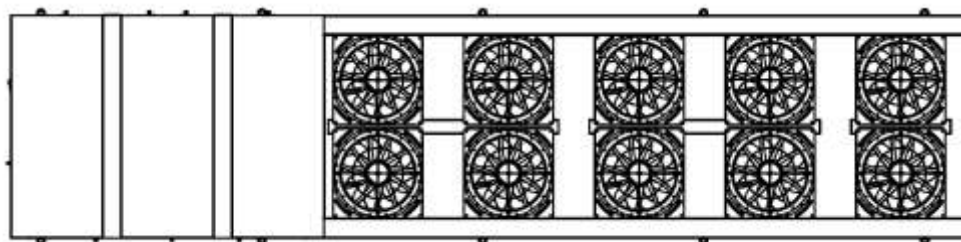
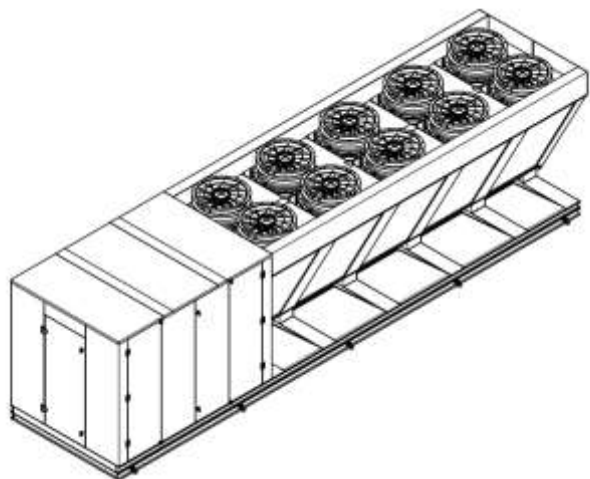
THE CLADE OAK 500kW //

Single unit combining; compressor station, controls, gas cooler and water side pump, evaporator section





DIMENSIONAL INFORMATION //





TECHNICAL INFORMATION //

Clade Oak ASHP		Oak -500Kw ASHP
Nominal conditions: Water side		flow 45c to 85c Return temperature <35°C
Nominal conditions: CO ₂ side		Ambient air temperature +3°C (85% RH) and -9°C evaporation
Compressor Manufacturer		Dorin
Compressor Heating Qty	Pcs.	4
Compressor Paralell Qty	Pcs.	1
Compressor Power @ Design total	kW	190.2
Evaporator fans Power at design	kW	14
Total	kW	206
Heat Pump Design Run Amps DRA	A	362
Ancillary Controls Amps	A	4
Total Amps	A	366
Variable speed drive (VSD)	Pcs.	2
Refrigerant charge (CO ₂)	kg	400
Electrical supply	-	3~ 400V 50 HZ
Housing Weight (empty)	kg	3,254
Housing Weight (operational)	kg	3,454
Load Cell A Weight (empty)	kg	2,920
Load Cell A Weight (operational)	kg	3,120
Load Cell B Weight (empty)	kg	N/A
Load Cell B Weight (operational)	kg	N/A
Sound Power	dB(A)	62
Connections waterside flow	DN	67mm Copper
Connections waterside Return	DN	67mm Copper
Connections waterside Pressure Rating	PN	10
Waterside Burst Disk	PN	10
Communication protocol	-	MODBUS/BACNET
IP-Class	-	IP54
Evaporators Type	-	V Block
No. evaporators	Pcs.	10
Fin Material	-	AL/MG
Defrost Type	-	Cool Gas CO ₂
Defrost medium	-	CO ₂
Defrost design/condition	-	> +6c ambient Off Cycle / < +6c ambient Cool Gas
Fan regulation	-	0-10v
Colour	-	BS48 – 000A05 Textured Grey





HEAT PUMP PERFORMANCE //

Noise Performance Characteristics					
Model name	Nameplate output (kW)	Output Temp (°C)	Noise Data db(A)		
			Sound Power	Sound Pressure @ 1m	Sound Pressure @ 10m
Oak 500Kw	500	65	87	62	52
		70	87	62	52
		75	88	63	53
		80	88	63	53

Clade Heat Pump Performance Characteristics																													
Model name	Nameplate output (kW)	Output Temp (°C)	Return Temp (°C)	SCOP	SPF	-10°C External			-5°C External			0°C External			5°C External			10°C External			15°C External			20°C External			25°C External		
						QH (kW)	PI (kW)	COPH (-)	QH (kW)	PI (kW)	COPH (-)	QH (kW)	PI (kW)	COPH (-)	QH (kW)	PI (kW)	COPH (-)	QH (kW)	PI (kW)	COPH (-)	QH (kW)	PI (kW)	COPH (-)	QH (kW)	PI (kW)	COPH (-)	QH (kW)	PI (kW)	COPH (-)
Oak 500kW	500	55	35	2.8	2.9	400	194	2.06	500	218	2.29	550	214	2.57	600	210	2.86	600	192	3.13	600	177	3.39	600	165	3.63	600	152	3.95
		60	35	2.8	2.9	400	194	2.06	500	218	2.29	550	214	2.57	600	210	2.86	600	192	3.13	600	177	3.39	600	165	3.63	600	152	3.95
		65	35	2.8	2.9	400	194	2.06	500	218	2.29	550	214	2.57	600	210	2.86	600	192	3.13	600	177	3.39	600	165	3.63	600	152	3.95
		70	35	2.8	2.9	400	199	2.01	500	227	2.2	550	220	2.5	600	214	2.8	600	197	3.05	600	182	3.3	600	169	3.55	600	154	3.9
		75	35	2.8	2.9	400	200	2	500	227	2.2	550	220	2.5	600	214	2.8	600	197	3.05	600	182	3.3	600	169	3.55	600	154	3.9
		80	35	2.8	2.9	400	200	2	500	227	2.2	550	220	2.5	600	214	2.8	600	197	3.05	600	182	3.3	600	169	3.55	600	154	3.9

Clade Heat Pump Performance Characteristics																													
Model name	Nameplate output (kW)	Output Temp (°C)	Return Temp (°C)	SCOP	SPF	-10°C External			-5°C External			0°C External			5°C External			10°C External			15°C External			20°C External			25°C External		
						QH (kW)	PI (kW)	COPH (-)	QH (kW)	PI (kW)	COPH (-)	QH (kW)	PI (kW)	COPH (-)	QH (kW)	PI (kW)	COPH (-)	QH (kW)	PI (kW)	COPH (-)	QH (kW)	PI (kW)	COPH (-)	QH (kW)	PI (kW)	COPH (-)	QH (kW)	PI (kW)	COPH (-)
Oak 500kW	500	55	30	3	3.1	400	180	2.22	500	202	2.48	550	198	2.78	600	194	3.09	600	177	3.39	600	164	3.66	600	153	3.93	600	141	4.27
		60	30	3	3.1	400	180	2.22	500	202	2.48	550	198	2.78	600	194	3.09	600	177	3.39	600	164	3.66	600	153	3.93	600	141	4.27
		65	30	3	3.1	400	180	2.22	500	202	2.48	550	198	2.78	600	194	3.09	600	177	3.39	600	164	3.66	600	153	3.93	600	141	4.27
		70	30	3	3.1	400	186	2.15	500	208	2.4	550	204	2.7	600	200	3	600	182	3.3	600	167	3.6	600	156	3.85	600	143	4.2
		75	30	3	3.1	400	186	2.15	500	208	2.4	550	204	2.7	600	200	3	600	182	3.3	600	167	3.6	600	156	3.85	600	143	4.2
		80	30	3	3.1	400	186	2.15	500	208	2.4	550	204	2.7	600	200	3	600	182	3.3	600	167	3.6	600	156	3.85	600	143	4.2



BUILDING CONNECTIONS //

POWER

3 phase.

Connection box mounted in position shown.

Isolation at control panel only.

Installer to provide local isolator external to heat pump.

HEATING

Supplied with primary pump with 14m spare head.

Flow and return located in position shown.

PN 10 Flanged steel connections with butterfly valve.

CONDENSATE

Condensate from the evaporator will drain centrally from the base of the unit.

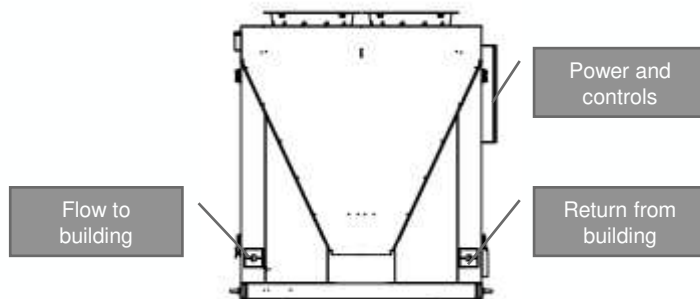
It is recommended that a gully be installed below the heat pump and lead to a soak away.

CONTROLS

The heat pump has self contained controls that manage its operation and the primary pump.

Alarms

- ❖ Hardwired shut down signal for fire alarm
- ❖ CO₂ detection
- ❖ Other fault
- ❖ High return water temperature.



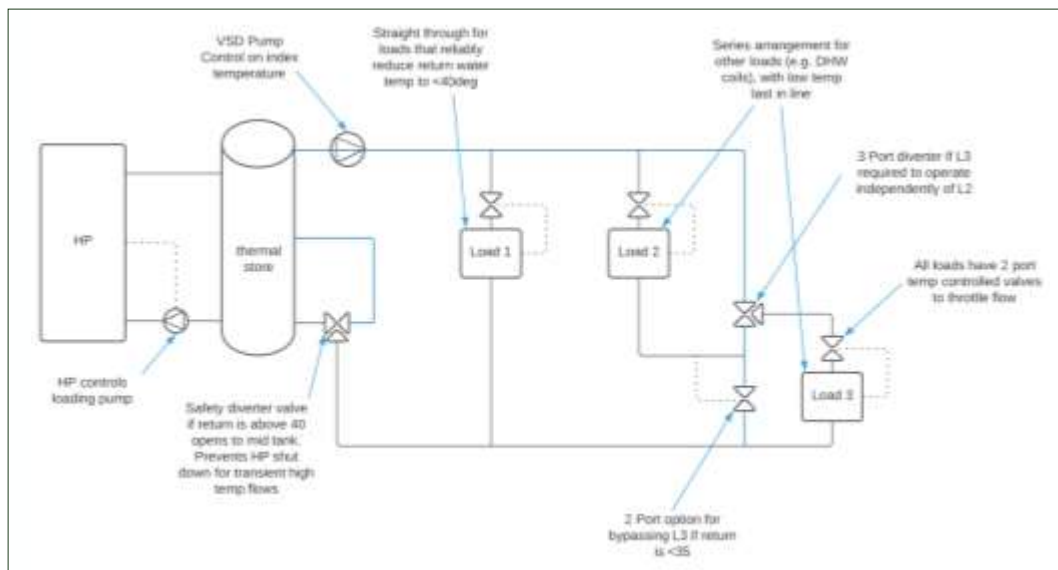
SYSTEM DESIGN

Here are our recommendations for good system design, however each building and application is different and so the system should be designed to meet the specific needs of the building.

The designer should aim to minimise the return water temperature to the heat pump in order to generate the highest COP possible.

Clade offers engineering support if required.

- ❖ Series arrangement of heat load by temperature with the lowest last
- ❖ Proper sizing of terminal units for high DT
- ❖ High quality two port control on terminal units to prevent high temperature bypass
- ❖ VSD pumping controlled on temperature at the index point
- ❖ Zero bypass on the system
- ❖ Proper commissioning of systems
- ❖ Data and analytics for continuous improvement
- ❖ Primary control on the return water temperature
- ❖ Thermal store to even out temperature variations





LEEDS MANUFACTURING CENTRE //



- UK based
- 35 years of engineering experience
- Leeds manufacturing division
- Committed to sustainable business and sustainable products
- Investing in people, diversity & inclusion
- Non leveraged, owner operated



ACCREDITATIONS
 ISO 9001:2015
 ISO 14001:2015
 OHSAS ISO 18001:2007



CERTIFICATIONS
 Altius Assured Vendor Award
 Altius ODM Vendor Award
 CHAS
 Sales Contractor



THANK YOU //

www.clade-es.com

Sales@clade-es.com

Aftersales@clade-es.com

Head Office & Registered Office //
Bristol & Bath Science Park,
Dirac Crescent, Emersons Green,
BRISTOL BS16 7FR

The Technology Centre //
Unit R3 Gildersome Spur Industrial Estate,
Stone Pits Lane, Morley,
LEEDS LS27 7JZ

